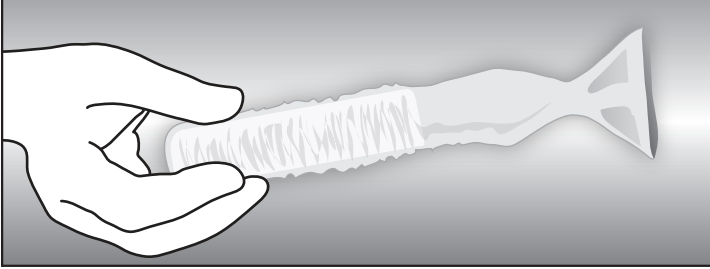
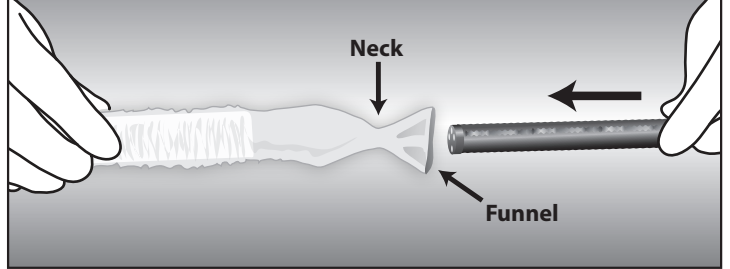


Installation

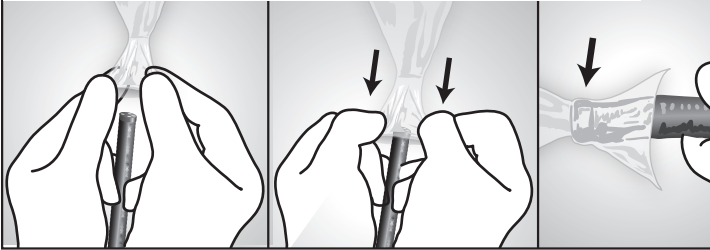
1 - Endoscope Cover on Applicator



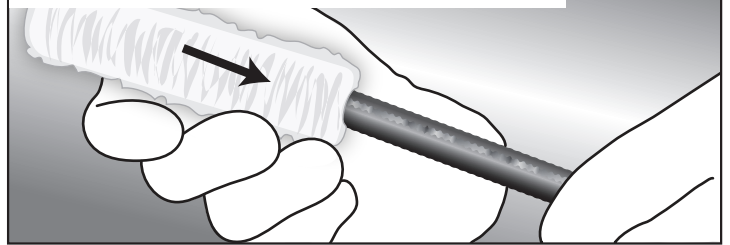
2 - Pre-Install Position



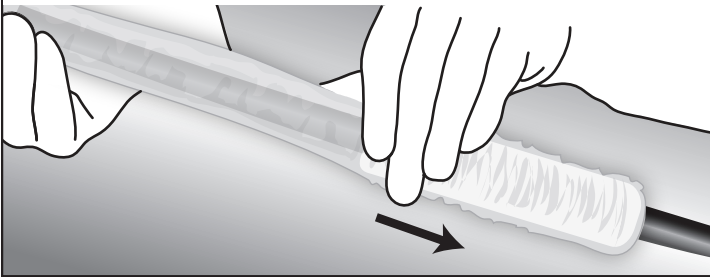
3 - Introduce tip into funnel, pull funnel over tip, scope should be in center of neck



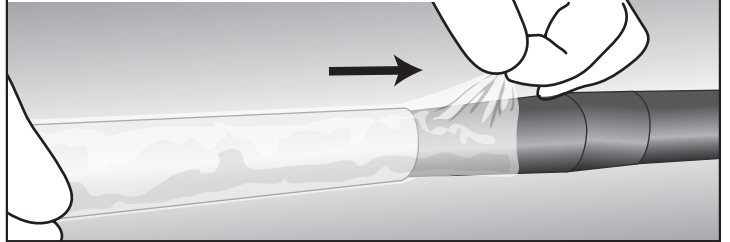
4 - Slide applicator over tip to invert the cover over the length of scope



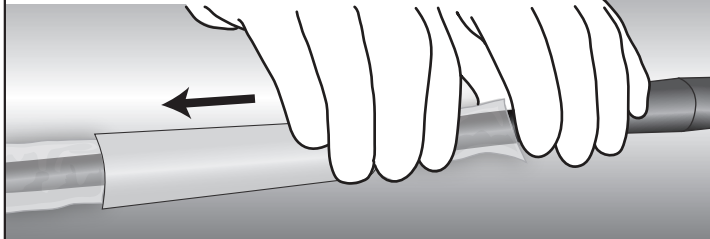
5 - Continue to install cover over length of scope



6 - Gently pull flared end of cover up to complete installation



7 - Slip empty applicator back over length of scope and remove

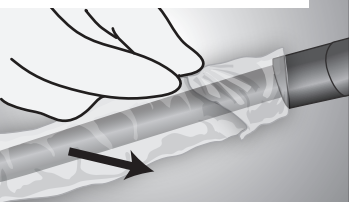


8 - Advance tip through open end of cover to clear active channel

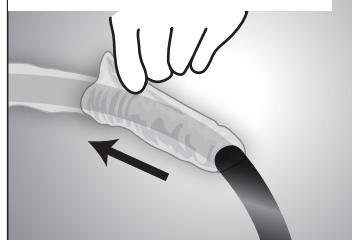


Removal

1 - Fold flared end on itself and pull back over scope



2 - Continue to pull back over scope



3 - If probe cover gathers too tightly, pull "Grip Tip" off of colonoscope to free up



4 - Discard probe cover and applicator after use